



DESKTOP FIBER LASER SYSTEMS

RL-GM3-FXX - MINI / RL-GU2-FXX - MICRO

Radian's high-performance desktop fiber laser Systems are a professional, high-quality, compact and feature rich engraving machine.

These fully enclosed systems have a variety of premium features that set them apart from the competition. They incorporate interlocked, removable doors and side panel which allow for easy object placement and for marking larger or bulky objects. Fiber lasers are perfect for marking inorganic items.

KEY FEATURES:

- Small footprint ergonomic enclosure with optional base stand
- Auto Focus with motorized Z-axis
- Internal work light
- Red tracing laser
- Detachable doors and aide panels to accommodate large work pieces
- Expansion features such as rotary tools and indexing tables
- Available in 20 or 30 watts

RADIAN™

L A S E R S Y S T E M S

MINI FIBER LASER SYSTEMS

SPECIFICATIONS:

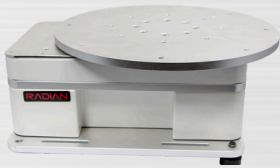
Communication	Ethernet/USB
Focal Mode	Micro - 2D Mini 3D, 3-Axis Dynamic Focus
Laser Wattage	20 and 30 Watts
Marking Speed	≤ 10,000mm/s
Engraving Area	Standard 150mm x 150mm
Wavelength	Fiber 1064nm
Voltage	110-220VAC, 50-60HZ, Single Phase, Auto-sensing
Weight	60 lbs
Enclosure Dimensions	Micro - 430mm x 350mm x 650mm Mini - 430mm x 455mm x 720mm
Environmental	Temperature 10-30°C Humidity 30-80%
Tracing Laser	Red, 635nm
Cooling	Air
Ventilation System	External Port
Laser Marking Studio	Included, Requires a computer running Windows 10

DESKTOP FIBER 2D/3D



MICRO MINI (20 ONLY)

ACCESSORIES:



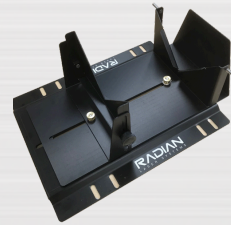
ROTARY MOTOR



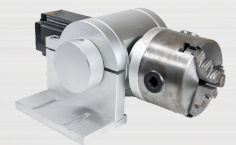
SAFETY GLASSES



MULTIPLE STANDARD
ROTARY DISK OPTIONS
(CUSTOM AVAILABLE)



ADJUSTABLE
DRINKWARE
NEST



STANDARD ROTARY
WITH TILT

OFFICIAL FUME
EXTRACTOR DISTRIBUTOR
OF



**ADDITIONAL
ACCESSORIES AVAILABLE
ONLINE**

