



OPEN FRAME FIBER LASER SYSTEMS RL-GTX-FXX / RL-GNX-FXX SERIES

The Radian 2D/3D Open Frame Fiber Laser Systems are for entry-level to high-volume operations where precision, easy operation and low maintenance are required. The open frame form factor and large marking area allow for marking on a wide range of inorganic objects. Optional accessories such as Radian's custom rotary systems aid in increased productivity. Radian's 3D Dynamic Focus Module allows for marking on a curved surface without rotation of the work piece.

KEY FEATURES:

- Large Open Work Area and Portable Form Factor
- Auto Focus Optional
- 3D Model: 3D Marking on a Curve without Rotation of the Work Piece
- Expansion Features Such as Rotary Tools and Indexing Tables

RADIAN™

L A S E R S Y S T E M S

OPEN FRAME FIBER LASER SYSTEMS

SPECIFICATIONS:

Communication	Ethernet/USB
Focal Mode	2D or XYZ 3-Axis Dynamic Focus
Laser Wattage	20, 30, 50, 60, 100, or 120 Watts
Marking Speed	8,000mm/s
Engraving Area	100mm x 100mm 150mm x 150mm 300mm x 300mm
Wavelength	1064nm
Voltage	110-240 VAC 50/60 hz
OS	Windows XP, 7 & 10
Weight	90lbs/150lbs
Exterior Dimensions	24"W x 29"D x 60"H (RL-GTX-FXX)
Bed Size	Variable based on application
Environmental	Temperature 10-30°C (55-90°F) Humidity 30-80%
Tracing Laser	Yes
Cooling	Air
Ventilation System	External / Optional
Laser Marking Studio	Included



OPEN FRAME WITH NO TABLE



OPEN FRAME WITH TABLE
AND OPTIONAL DISK ROTARY
ATTACHMENT

ACCESSORIES:



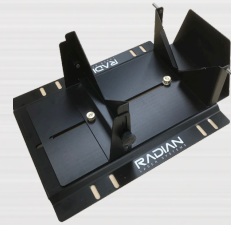
ROTARY MOTOR



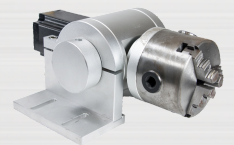
SAFETY GLASSES



MULTIPLE STANDARD
ROTARY DISK OPTIONS
(CUSTOM AVAILABLE)



ADJUSTABLE
DRINKWARE
NEST



STANDARD ROTARY
WITH TILT

OFFICIAL FUME
EXTRACTOR DISTRIBUTOR
OF

FILTRABOX
BY PAT



**ADDITIONAL
ACCESSORIES AVAILABLE
ONLINE**

